



IR236E: IR Fever Sensing System

Non-intrusive and wide area efficient inspection & measurement system

Application field: Inspection and quarantine

IR236E IR fever sensing system is professional in taking thermal images even on the flowing crowds with high efficiency and distinguish those with elevated temperature, which indicates possible presence of the fatal virus, like SARS and Zika Virus. With a size similar to competition products, it integrates a wide assortment of features that deliver unprecedented efficiency, convenience and productivity. IR236E fever sensing system is absolutely the ideal equipment in the airports, ports, and stations, and it is the first guard to protect your health and wealth.

Features

Find the fever people precisely and alarm automatically

With advanced infrared thermal imaging technology, inspect wide and large area flowing crowds, distinguish those who with elevated temperature and alarm immediately



Razor-sharp visual and thermal imaging

- It is used UFPA 384*288 pixels detector and digital signal transmission, keeps delivering razor-sharp thermal imaging video and visual video



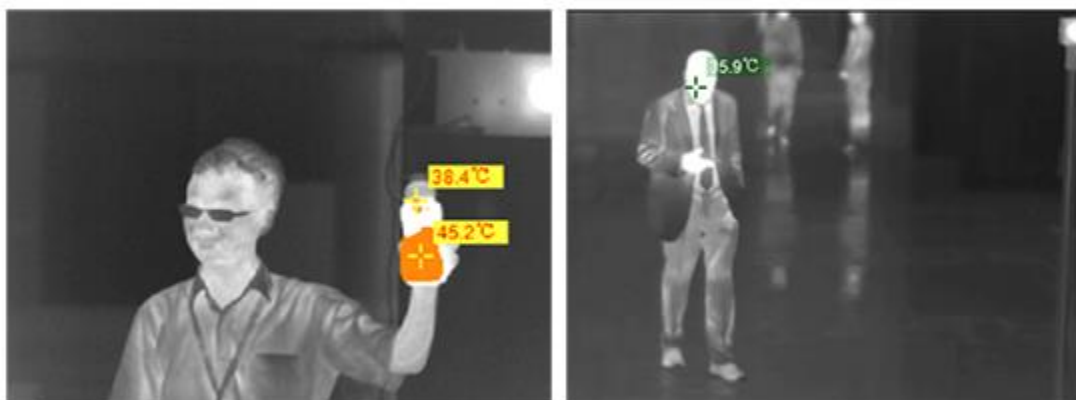
Real-time high-frequency data capture transmission and storage

- With digital signal transmission and 50Hz/60Hz PAL/NTSC frame frequency, it could capture real-time video and display without any delay



Precise single & multiple hot spots and Alarm

- Intelligent object differentiation avoiding false alarm and interference
- It alarms to the person's face if with high temperature, and will never be affected by other high-temperature small objects like cigar or hot food



Parameter

IR Thermal Module		
Detector	Uncooled FPA, 384 x 288	
Pitch	25μm	
Specitral Range	8μm~14μm	
NETD	≤80mk	
	Lens	
FOV	13.7° x10.3°	
Focus	40mm	
	Visible	
Resolution	1280X960	
	Temperature	
Measurement Range	0°C ~50°C	
Accuracy	±0.3°C	
Temperature Calibration	Built-in and exteriorization blackbody, auto calibration	

Video

Frequency	50Hz/60Hz
Format	PAL/NTSC

Power

Voltage	AC220V \pm 10%, 50HZ
---------	------------------------

Environment Characteristics

Working Temperature	-10°C ~ 50°C
Storage Temperature	-20°C ~ 60°C
Humidity	< 90%

Interface

Interface	RJ45, power
-----------	-------------

Physical Parameter

Dimensions	430mm x 240mm x 40mm (excluding PC)
------------	-------------------------------------

Weight	2KG (excluding PC)
--------	---------------------